



Get to Know CAN

History:

- Community Action Agency established in 1965 as part of the “War on Poverty”
- The designated anti-poverty organization – 501(c)3 serving low-income Baltimore County residents.
- CAN has consistently grown and expanded our services



Our Mission & Vision

Mission: *Helping People. Changing Lives.* The Community Assistance Network, Inc. (CAN)'s Mission is to work in partnership with the community to develop, operate, and support programs that reduce vulnerability and empower personal growth, dignity, stability and self-sufficiency among people in Baltimore County experiencing economic challenges.

Vision: We imagine a future where all people in Baltimore County are self-sufficient and free of the burdens of poverty.

What We Do

• Program Areas:

Food Security

Income Security & Self sufficiency

Outreach Services

Case Management

2 GEN-w hole Family Approach

Summer/After School Programs

Financial Counseling & Assistance

SNAP applications

Job Development

Housing Security

Street Outreach/Shelter Diversion

Emergency & Transitional Shelters

Permanent Supportive Housing/Rapid rehousing

Aftercare services



Social Determinants of Health

- Housing =
- Food =
- Income



Our FY2022 Impact (10/1/2021-9/30/2022)



2,538 individuals received supplemental food



583 households received eviction prevention services



1,184 individuals slept in our shelters; **290** were children



57 shelter guests found employment

Food Insecurity in Baltimore County

- In Baltimore County, **85,270** residents, **26,930** of which are **children**, are **food insecure**.
- **Dundalk**, where CAN is located, **has the highest amount of unmet need** in the county.
- Between **March of 2022** and **April 2023**, CAN distributed **669,345 pounds of food**, enough to prepare **557,788 meals** for Baltimore County neighbors in need.

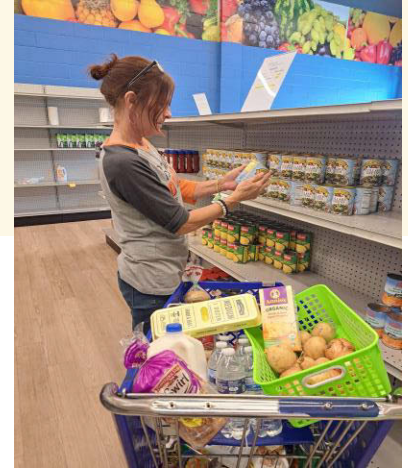


CAN fed an average of 5,950 individuals annually through our pantry.

(2020–2022)

Community Choice Food Pantry

- Main Administration Office / Community Choice Food Pantry & Resource Center
- **Main Office/Food Pantry – Dundalk Location, 7900 E. Baltimore Street, Baltimore, MD 21224**

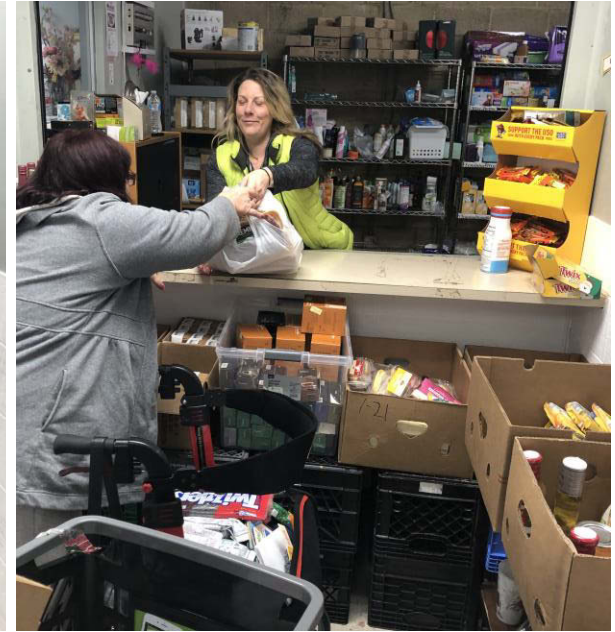
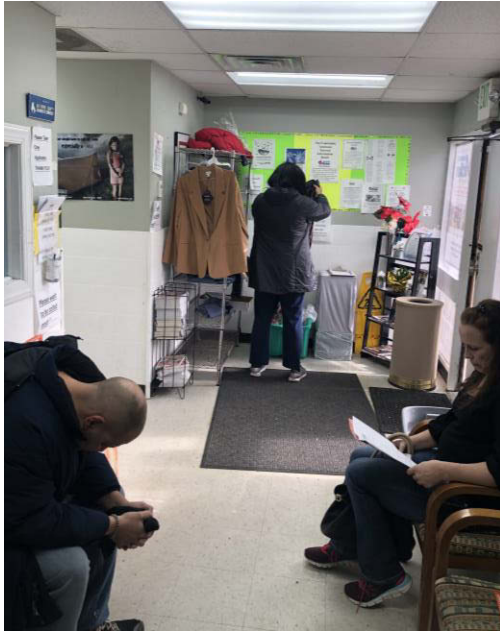


COMMUNITY CHOICE FOOD PANTRY

At CAN, we provide supplemental food to eligible Baltimore County residents. Each neighbor leaves the food pantry with enough groceries for approximately 5 to 7 days of meals to include breakfast, lunch, dinner and 2 snacks per day. Each family can return for food services every 30 days. Recertification is completed every six months.

Hours of Operation: Monday, Wednesday, Thursday & Friday 9:00 am–10:45 am & 1 pm–2:45 pm

CAN's Pre-COVID Food Pantry



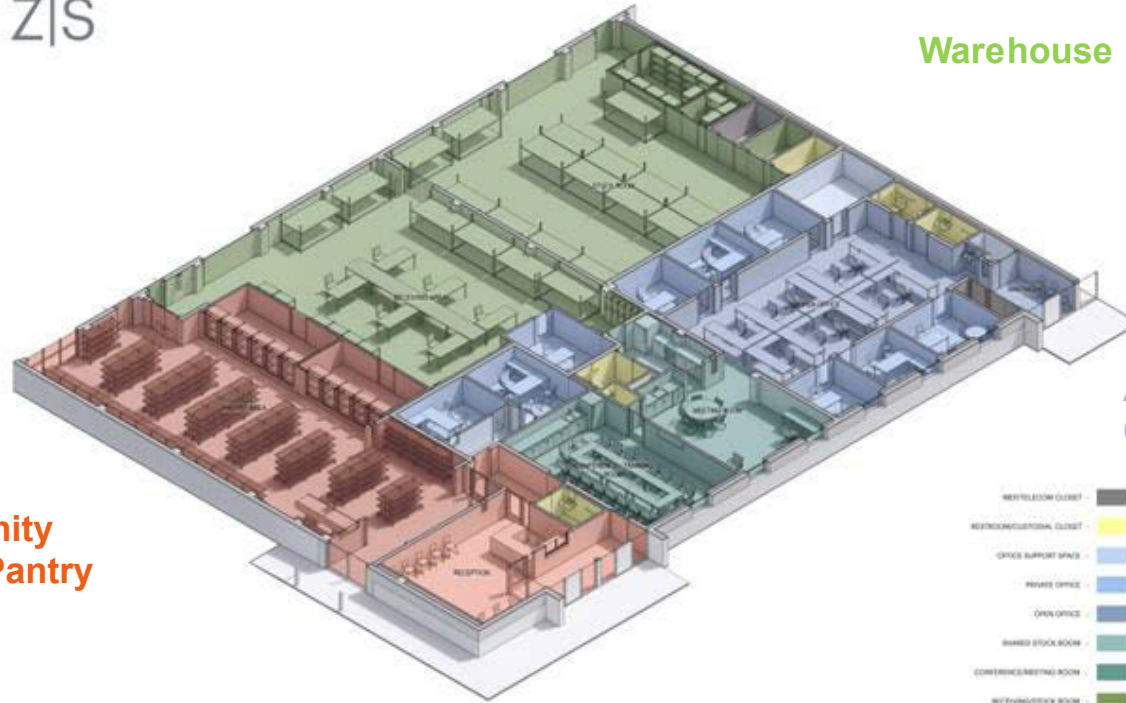
Community Choice Pantry Floorplan

Z|S

Warehouse

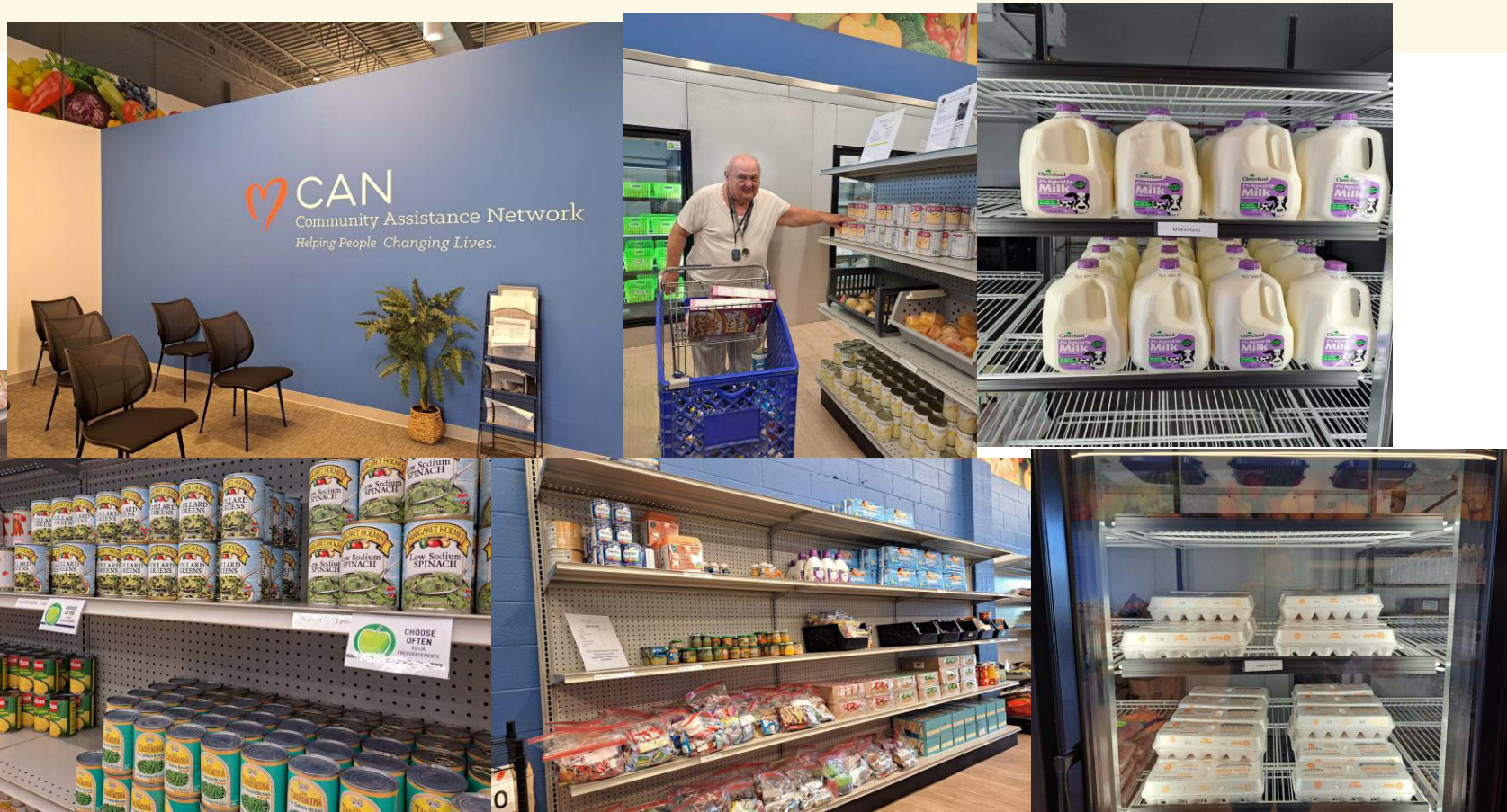
Administrative
Offices

Community
Choice Pantry



- RESTROOM CLUSTER
- RESTROOM/CLUSTER CLUSTER
- OFFICE SUPPORT SPACE
- PRIVATE OFFICE
- OPEN OFFICE
- WAREHOUSE STOCK ROOM
- COMMERCIAL MEETING ROOM
- RECEIVING/STOCK ROOM
- TRAY SUPPORT SPACES
- TRAY AREA

CAN's Community Choice Food Pantry



Post COVID-19 Trends



- During the COVID-19 pandemic, CAN observed a **40% increase** in visitors to our Food Pantry seeking food assistance.
- From March 9 through December 31, 2021, we served roughly **10,000 households** (1,699 first-time visitors) with enough food for over **800,000 meals**.
- Post Covid we are serving between 30-50 families per day and observing insatiable need in Baltimore County.
- At the current pace, CAN will serve more than **7,000 households** via the Food Pantry this year.

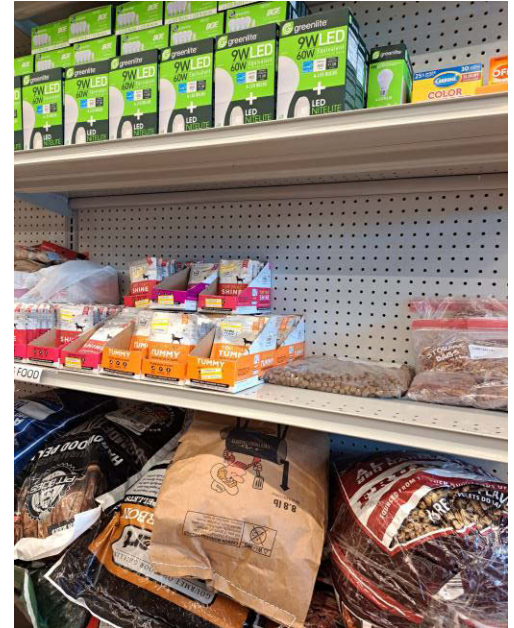
What is the Community Choice Pantry Model?

- Allows community members seeking food assistance to choose their groceries and other household products
- Resembles & functions like a grocery store
- Reduces waste, provides consideration for health issues, religious and cultural observations
- In order to elevate CAN's Pantry to meet best practice models, and offer community members a dignifying, welcoming space to receive services, CAN remodeled the Food Pantry to function as a **community choice pantry**.
- We incorporated state-of-the-art **“digital pantry” technology** which will allow neighbors to place orders for desired food and will enhance inventory management.



CAN's Community Choice Food Pantry

- Point Sheets
- SWAP (Supporting Wellness At Pantries)
- Retail Recovery
- Pet Food
- Clothing/Shoes
- Other Items (toys, small furniture)



Positive Impacts on Neighbors



Dignity of choice



Encourages healthy, nutritious eating (SWAP)



Accommodates special dietary needs



Improves community satisfaction

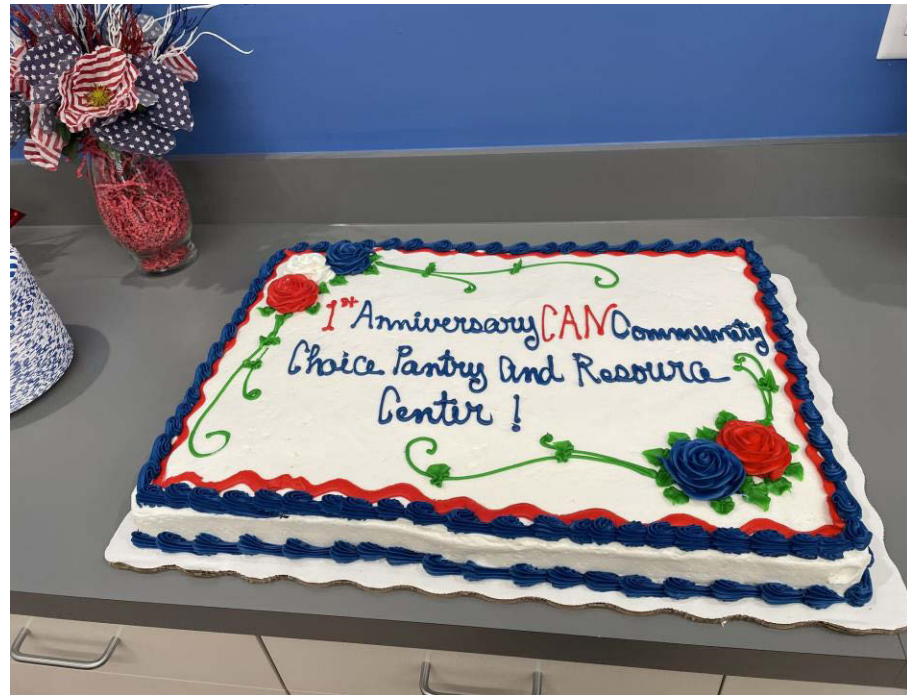


Attracts more donors and volunteers



A community choice pantry model allows clients to choose foods for themselves, modeling a grocery store.

The CAN Choice Pantry Celebrates One Year of Service



Food Rx Program

- CAN Pantry in partnership with MedStar Franklin Square
- One year program
- Dietician will work with referred patients to improve health conditions through changes in diet
- Projected to start July 2023



Resource Center

- CAN hosts a variety of educational classes
- Designed to promote self-sufficiency and encourage healthy nutritional choices
- Incentives



Diaper Distribution Demonstration & Pilot Program

- CAN is one of 11 Community Action Agencies participating
- Purpose: To evaluate the ability of CAA's and social service agencies to provide diapers and diapering supplies on a consistent basis through diaper distribution programs while also offering support services for families with low incomes.



Outreach Program

- **OUTREACH SERVICES**

- **Financial Assistance** We offer assistance with eviction prevention, security deposit and limited financial emergencies.
- **SNAP** The Supplemental Nutritional Assistance Program formerly known as 'Food Stamps'. CAN now assists with processing applications! Call your nearest outreach center to see if you qualify. *Income restrictions do apply*
- **Financial Counseling** Financial literacy program training provides a basic understanding of money, learning to prioritize needs, and make critical financial decisions to help towards self sufficiency.
- **After School and 2Gen/Whole Family Program** Gardenville Outreach location after school program. Activities include homework assistance, recreation, and student service learning.

Outreach Office Location

- **Essex – Kings Mills Apartments, 958 Ashbridge Drive Ste. D, Essex, MD 21221**
- **Hillendale – Hillendale Gate, 6600 Wycombe Way, Baltimore, MD 21234**
- **Randallstown – Liberty Family Resource Center, 3525 Resource Drive, Randallstown, MD 21133**
- **Garden Village Community- 6011 St. Regis Rd Baltimore, MD 21206**
- **Dundalk main office- 7900 East Baltimore St Dundalk, MD 21222**

Job Development

- Provides resume assistance, employment referrals/leads, and interview & job readiness training
- CAN hosts regular job fairs
- Partnerships with Royal Farms, MedStar, Bowery Farms, CCBC, Baltimore County Schools & many more



CAN Outreach & Pantry Events



Fontana Village Harvest Fest



Community Food Distribution w/ former
Baltimore Ravens Jacoby Jones



Randallstown Back-2-School Drive



Hillendale Community Day



Volunteer Appreciation Day (Main Office /Food Pantry)

- In 2022 Community Assistance Network, Inc. (CAN's) Homeless Services Program provided emergency shelter daily for 1,184 people facing homelessness; 198 were children.
- 81 staff members operate the two largest shelters in Baltimore County; the Eastside Family Resource Center and the Westside Men's Shelter; 24 hours a day, 7-days a week.
- CAN's Samaritan Program is our HUD-funded, Permanent Supportive Housing Program that provides housing for 14 chronically homeless adults across the County, and our Arbutus facility houses 13 chronically homeless women.

Homeless and Housing Programs

- **HOMELESS SERVICES**

- **Eastside Family and Men's Shelter** – 9150 Franklin Square Drive, Rosedale, MD 21237
- **Westside Men's Shelter** – 309 Redwood Circle, Catonsville, MD 21228
- **Arbutus Permanent Supportive Housing** – 4000 Southwestern Blvd., Arbutus, MD 21229
- **Rapid Rehousing:** Provides short-term financial assistance and wrap around case management Services to people who moved from homelessness to permanent housing.
- **Aftercare:** Follow-up services provided to shelter residents who have found housing and exited shelter

- **PERMANENT SUPPORTIVE HOUSING (PSH)**

- **Arbutus Women's Housing** – 13 efficiencies (single room occupancy) for single adult women chronically homeless with a diagnosed disability
- **Scattered Sites** – 14 one bedroom apartments for single adults chronically homeless with a diagnosed disability

Affordable Housing & Access to Community Services

- Preliminary planning stages
- Building better communities
- Providing access to resources

Proposed Site Plan



CAN Volunteers In Action

Your support is an important contribution, and **WE NEED YOU!**

If you are interested in volunteering at CAN, please reach out to our volunteer coordinator, April Stevens.

[Astevens @canconnects.org](mailto:Astevens@canconnects.org)



For More Information or to schedule a tour please contact:

Chief Executive Officer

- Mitchell Posner
- Office: 410-285-4674 x 117

Mposner@canconnects.org

Community Choice Pantry Manager

- Carla Schroyer
- Office: 410-285-4674 x 112

cschroyer@canconnects.org

