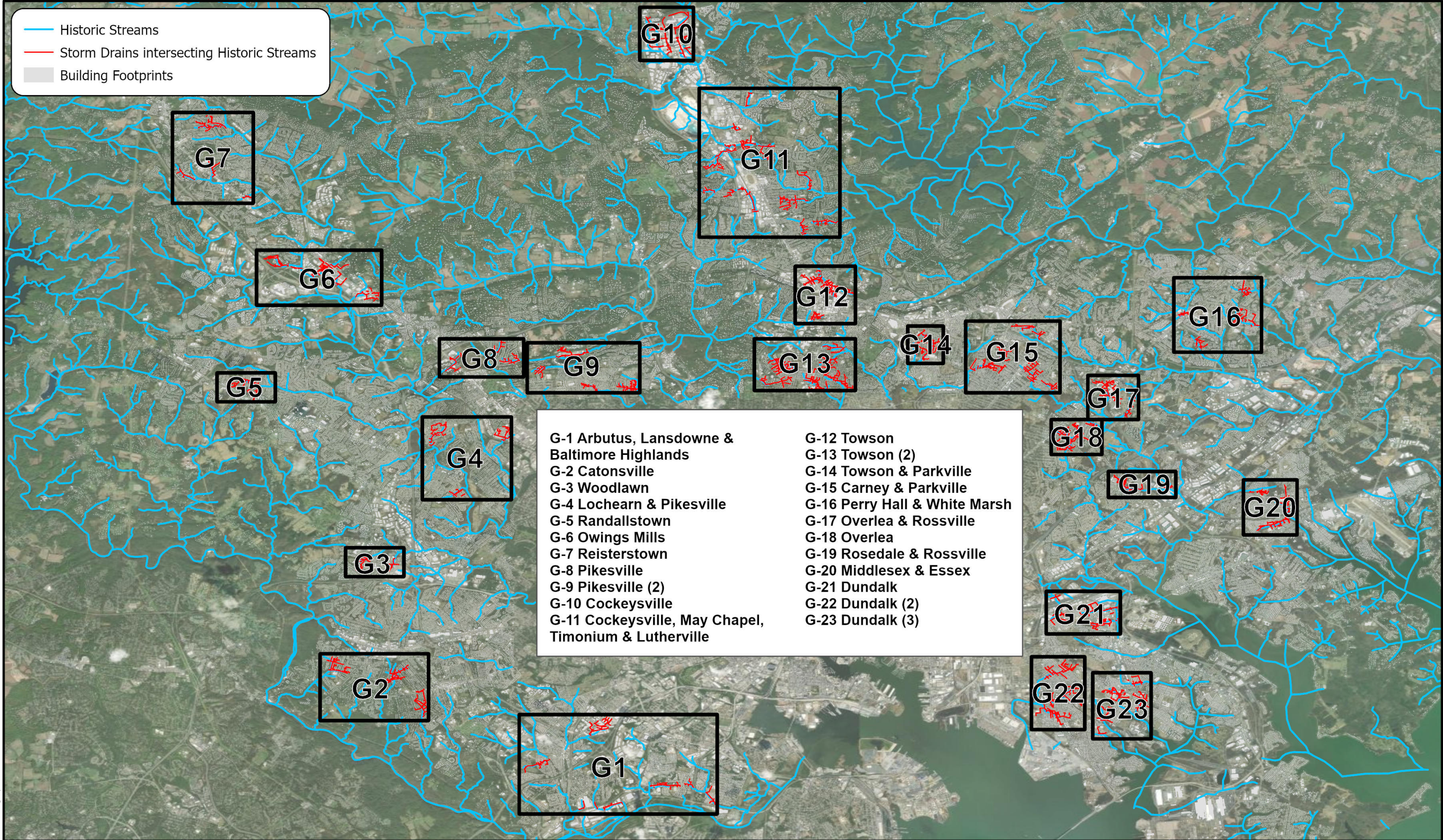


## **Appendix G: Storm Drains Intersecting Historic Streams**





**Figure G Neighborhood Grid**



**Hazen**

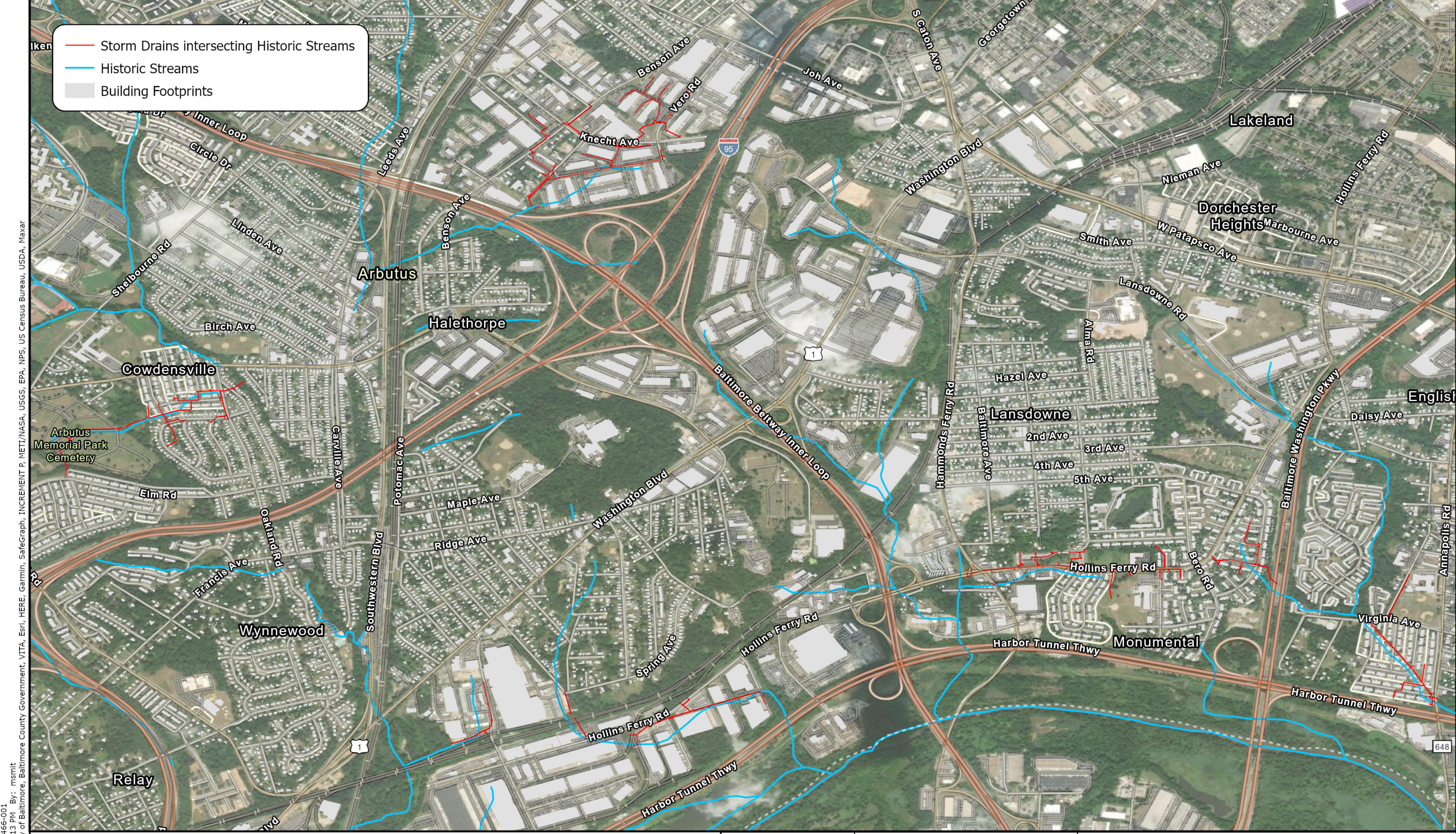
**Baltimore County  
Climate Action Plan**

Print Date: 4/14/2021 10:43 AM  
 Printed By: M. King  
 Reviewed By: B. Wright

**Storm Drains Intersecting  
Historic Streams**

**Appendix G**





Hazen Project Number: 31466-001  
Plot date: 4/13/2021 11:13 PM By: msmit  
Service Layer Credits: City of Baltimore, Baltimore County Government, VITA, Esri, HERE, Garmin, SafeGraph, INCREMENT P, METI/NASA, USGS, EPA, NPS, US Census Bureau, USDA, Maxar

<b>Figure G-1 Arbutus, Lansdowne &amp; Baltimore Highlands</b>					<b>Baltimore County Climate Action Plan</b>	
			Print Date: 4/13/2021 11:13 PM		<b>Storm Drain Intersecting Historic Streams</b>	<b>Appendix G</b>
		Printed By: M. King				
		Reviewed By: B. Wright				



Hazen Project Number: 31466-001  
Plot date: 4/14/2021 2:29 PM By: msmith  
Service Layer Credits: Maxar, Esri Community Maps Contributors, Baltimore County Government, VITA, Esri, HERE, Garmin, SafeGraph, INCREMENT P, METI/NASA, USGS, EPA, NPS, US Census Bureau, USDA

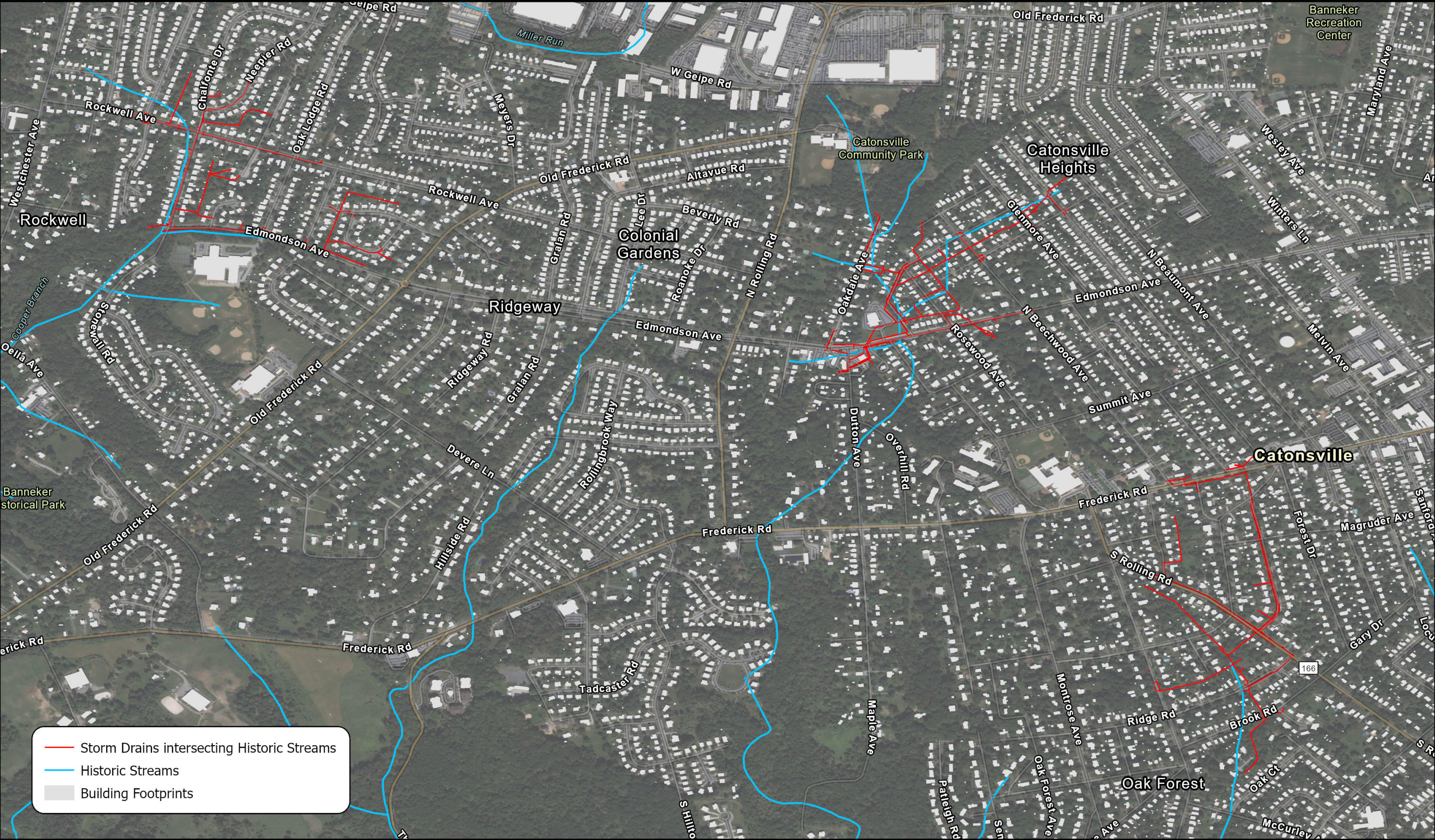


Figure G-2 Catonsville



Hazen

Baltimore County  
Climate Action Plan



0 1,250 2,500 Feet

Print Date: 4/14/2021 2:29 PM  
Printed By: M. King  
Reviewed By: B. Wright

Storm Drain Intersecting  
Historic Streams

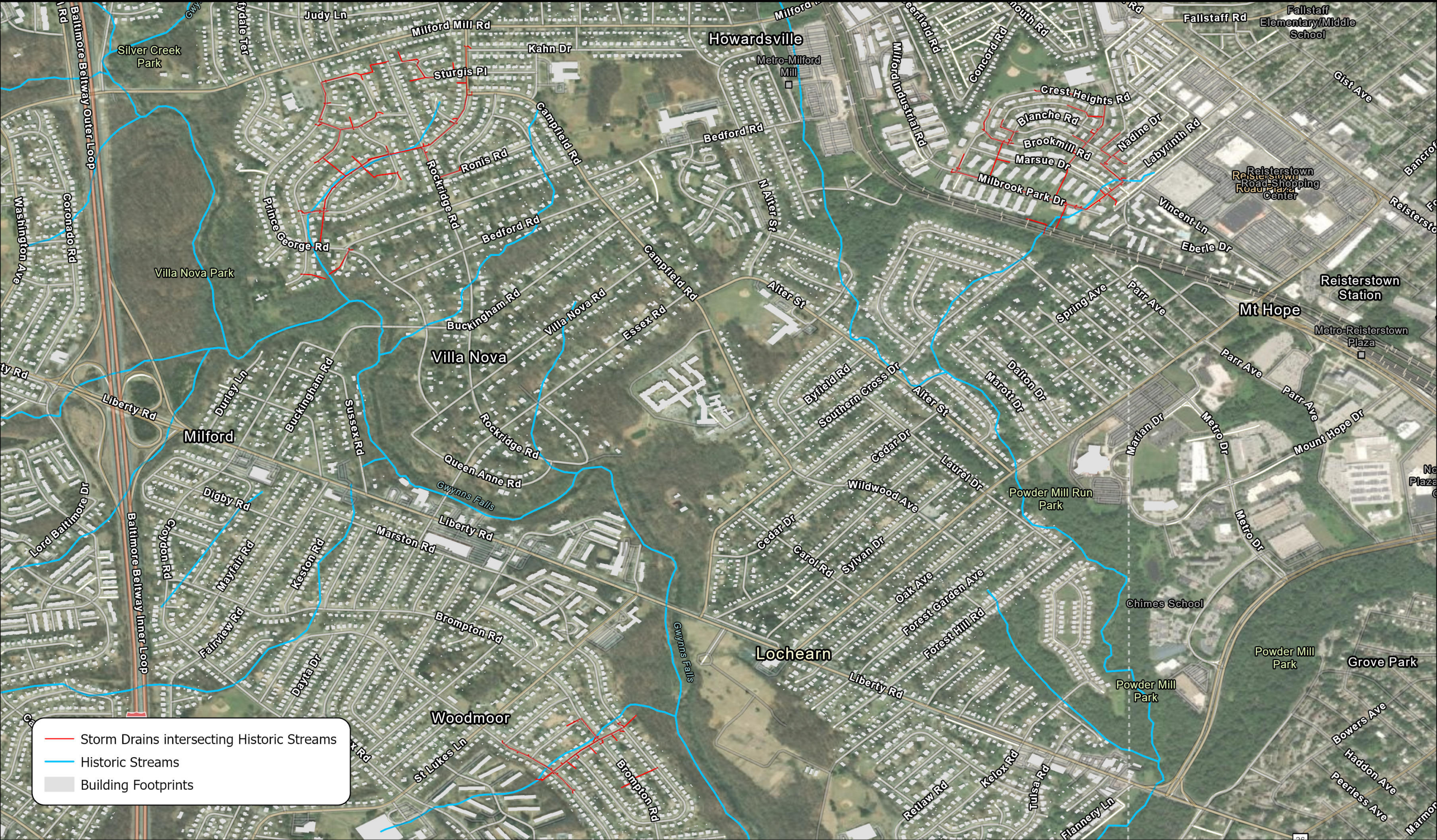
Appendix G







Hazen Project Number: 31466-001  
Plot date: 4/14/2021 9:52 AM By: msmith  
Service Layer Credits: Maxar, Esri, HERE, Garmin, SafeGraph, INCREMENT P, METI/NASA, USGS, EPA, NPS, US Census Bureau, USDA



**Figure G-4 Lochearn & Pikesville**



**Hazen**

Print Date: 4/14/2021 9:52 AM  
Printed By: M. King  
Reviewed By: B. Wright

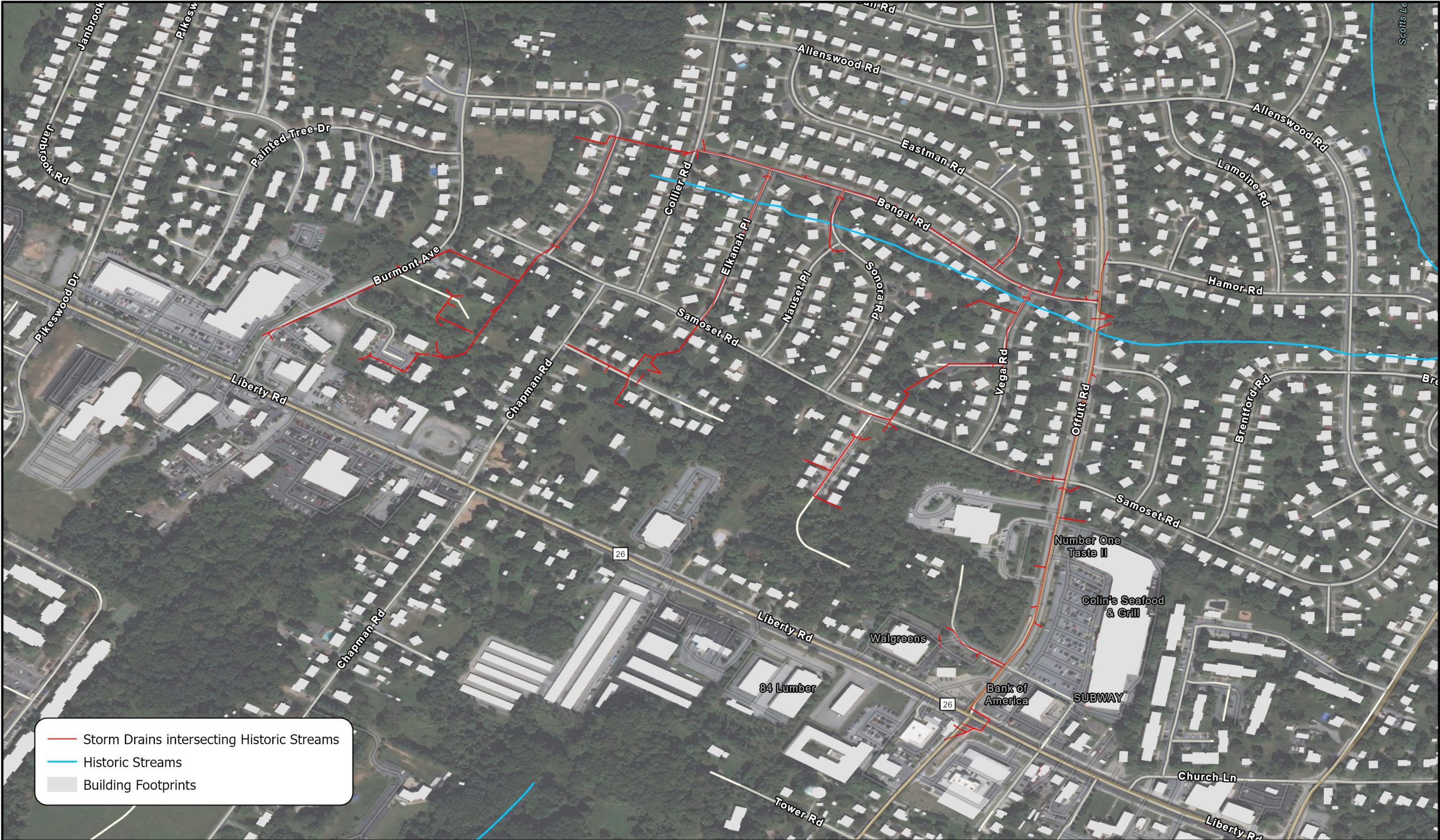
**Baltimore County  
Climate Action Plan**

**Storm Drain Intersecting  
Historic Streams**

**Appendix G**



Hazen Project Number: 31466-001  
Plot date: 4/14/2021 9:54 AM By: msmith  
Service Layer Credits: Esri Community Maps Contributors, Baltimore County Government, Carroll County, VITA, Esri, HERE, Garmin, SafeGraph, INCREMENT P, METI/NASA, USGS, EPA, NPS, US Census Bureau, USDA, Maxar



Storm Drains intersecting Historic Streams

Historic Streams

Building Footprints

Figure G-5 Randallstown

N

0

500

1,000

Feet



Hazen

Print Date:	4/14/2021 9:54 AM
Printed By:	M. King
Reviewed By:	B. Wright

Baltimore County  
Climate Action Plan

Storm Drain Intersecting Historic Streams	Appendix G
--	------------



