

# DPWT Planning Presentation



Lauren Buckler, Director  
111 W. Chesapeake Avenue, RM 307  
410.887.4120

Baltimore County  
Department of  
Public Works and  
Transportation



Kathy Klausmeier, County Executive

# SOLID WASTE

- Serves 250K single-family homes & 88K multi-family units.
- Transferred 605K tons of municipal solid waste.
- Processed 65K tons of recyclables, generating \$6.5M for the County.



Baltimore County  
Department of  
Public Works and  
Transportation



Kathy Klausmeier, County Executive

# COMPOSTING

---

- **Pilot program began with 100 homes in Jan. '24.**
- **Collected 318 tons of organic material.**
- **Plans to expand program in FY '26.**



# MATERIALS RECOVERY FACILITY (MRF)

- Seeking to expand existing recycling program.
- Exploring options to replace the current MRF.
- Grant-funded study expected to be completed in 2025.



Baltimore County  
Department of  
Public Works and  
Transportation



Kathy Klausmeier, County Executive

# EASTERN SANITARY LANDFILL

- **MDE permitting vertical expansion of site.**
- **Expansion expected to increase lifespan by at least 7 years.**
- **Estimated current lifespan is 2033.**



Baltimore County  
Department of  
Public Works and  
Transportation



Kathy Klausmeier, County Executive

# HIGHWAYS



# PAVEMENT MANAGEMENT SYSTEM

- **Tangible, objective to assess roads through Pavement Condition Index.**
- **Serves as a compass for setting goals.**
- **Plans to reassess roads every 3 years.**

## OUR NUMBERS

<b>8793</b> <i>Roads</i>	<b>33</b> <i>Crewe Chiefs</i>
<b>50</b> <i>Roads/Crewe Chief</i>	<b>~7,296</b> <i>Lane Miles of Road</i>
<b>\$11 Million</b> <i>Current Budget</i>	<b>\$399 Million</b> <i>Estimated Cost to Get all Roads Up to Average</i>
<b>71</b> <i>Average PCI for County Roads</i>	



Baltimore County  
Department of  
Public Works and  
Transportation



Kathy Klausmeier, County Executive

# PAVEMENT MANAGEMENT ACCOMPLISHMENTS

- **Successfully resurfaced 143 lane miles.**
- **Replaced 47 lane miles of concrete curbs and gutters.**
- **Process could extend life of roads by 10 years or more.**





# UTILITIES

---

- **Maintains more than 3,000 miles of sewer lines.**
- **Tasked with upkeep and operations of 2,600 sewer grinder pumps.**
- **Rebuilt and recirculated 301 pumps, saving County \$750K.**



Baltimore County  
Department of  
Public Works and  
Transportation



Kathy Klausmeier, County Executive

# FOG (Fats, Oils and Grease)

---

- **Collaborates with Dept. of Health to address issue in downtown Towson.**
- **Inspected 30 high-risk FOG generators, resulting in notable buildup reduction.**
- **Ongoing inspections scheduled.**



Baltimore County  
Department of  
Public Works and  
Transportation



Kathy Klausmeier, County Executive

# SYSTEM MAINTENANCE

---

- **Responsible for emergency response, preventative maintenance.**
- **Proactively cleaned 1,610 pipe segments through the year.**
- **Proven effective in eliminating blockages, preventing backups and averting sewer overflows.**



Baltimore County  
Department of  
Public Works and  
Transportation



Kathy Klausmeier, County Executive

# SEWER MAINTENANCE

---

- **Completed 606 sewer repairs and 622 storm drain repairs in 2024.**
- **Repairs encompassed inlets, manholes, pipes, outfalls, connections.**
- **Capital budget for Storm Drain section is \$1M biannually.**



Baltimore County  
Department of  
Public Works and  
Transportation



Kathy Klausmeier, County Executive

# METRO

---

- **Net incomes increased \$12M from last year; \$21M from 2 years ago.**
- **Average customer appeals response down decreased from 63 days to 15 days.**
- **New, modern online billing portal set to launch in January '26.**



Baltimore County  
Department of  
Public Works and  
Transportation



Kathy Klausmeier, County Executive

# TRANSPORTATION

---

- **Updating our Strategic Highway Safety Plan.**
- **Applying proven safety measures in high-risk areas in collaboration with communities, transportation agencies.**
- **Working toward advancing, implementing Vision Zero Plan.**



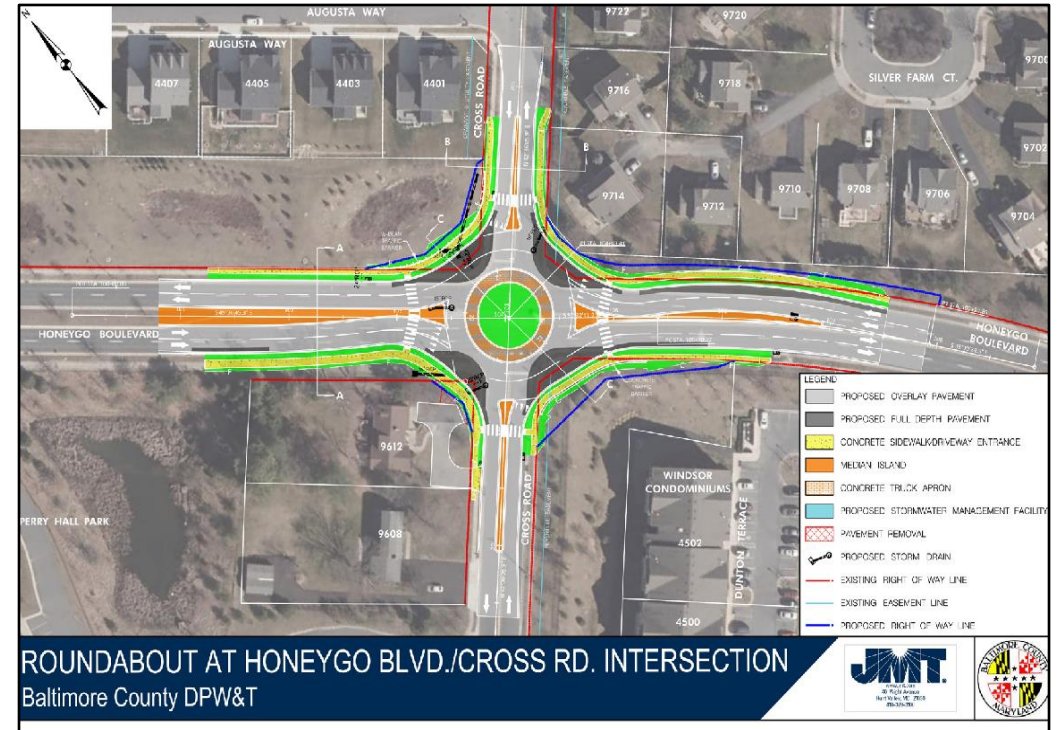
Baltimore County  
Department of  
Public Works and  
Transportation



Kathy Klausmeier, County Executive

# HONEYGO BOULEVARD ROUNDABOUT

- **Proceeding to 60% design; completion expected in summer.**
- **Final design, land acquisition anticipated by Spring 2025.**
- **Construction expected to take 12 to 15 months.**



Baltimore County  
Department of  
Public Works and  
Transportation



Kathy Klausmeier, County Executive

# TRAIL EXPANSIONS/ADDITIONAL SAFETY MEASURE

---

- **Feasibility studies, design work continues for several key trails.**
- **Trails create safer, more accessible routes for everyone.**
- **Expansion hopeful for LED sign technology.**



Baltimore County  
Department of  
Public Works and  
Transportation



Kathy Klausmeier, County Executive



# ENGINEERING

---

- **Current work includes:**
  - 68 development plans
  - 84 active design projects
  - 10 advertised construction contracts
  - 12 projects for other agencies



Baltimore County  
Department of  
Public Works and  
Transportation



Kathy Klausmeier, County Executive

# SEWER PROJECTS



- **Installed 3 miles of new sewer mains.**
- **Rehabilitated 33 miles of sewer mains.**
- **Replaced and installed 6.5 miles of water mains.**
- **Work continues on 6 active water & sewer pumping station improvement projects.**

Baltimore County  
Department of  
Public Works and  
Transportation



Kathy Klausmeier, County Executive

# ADDITIONAL ENGINEERING WORK

---

- Partnered with PAI for 1<sup>st</sup> year of developer securities cost increase.
- Surveying Division assisting Solid Waste with monitoring landfill capacity.
- Conducted 9 drone flights over landfill to assess active cell & rate its being filled.



Baltimore County  
Department of  
Public Works and  
Transportation



Kathy Klausmeier, County Executive

# WATER SUPPLY AND SEWAGE PLAN

**PUBLIC NOTICE**  
BALTIMORE COUNTY, MARYLAND WATER SUPPLY AND SEWERAGE PLAN  
AMENDMENT CYCLE 41

YORK COUNTY, PA

CARROLL COUNTY

HARFORD COUNTY

BALTIMORE CITY

HOWARD COUNTY

ANNE ARUNDEL COUNTY

23-01

A PUBLIC HEARING WILL BE HELD BY THE BALTIMORE COUNTY PLANNING BOARD AT 5:00 PM ON JULY 20, 2023 IN ROOM 104, JEFFERSON BUILDING 105 WEST CHESAPEAKE AVENUE, TOWSON, MD ON THE FOLLOWING ISSUE COMPRISING AMENDMENT CYCLE 41 OF THE BALTIMORE COUNTY WATER SUPPLY & SEWERAGE PLAN. THE STAFF REPORT WILL BE AVAILABLE ON THE DEPARTMENT OF PUBLIC WORKS AND TRANSPORTATION WEBSITE IN JULY 2023:  
<https://www.baltimorecountymd.gov/departments/public-works/engineering/master-plan>  
PERSONS IN NEED OF SPECIAL ACCOMMODATIONS FOR DISABILITIES SHOULD CALL (410) 887-3480. CHANGES TO THE HEARING LOCATION OR AGENDA WILL BE POSTED TO THE PLANNING BOARD WEBSITE:  
<https://www.baltimorecountymd.gov/central-services/commission/plan-and-planning-board>  
23-01, 1021 CARROLL ISLAND ROAD

Baltimore County  
Water Supply and Sewerage Plan

2023 Triennial Review

*Draft Report of the Review  
as submitted to the  
Baltimore County Planning Board*

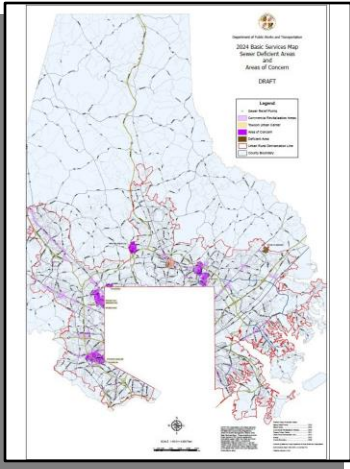
*September 21, 2023*

Errata & Addenda

1. Insert County Council Resolution
2. Insert Transmittal Letter from DPW&T Director to MDE

Errata & Addenda

1. Insert Final Action Letter from MDE Director



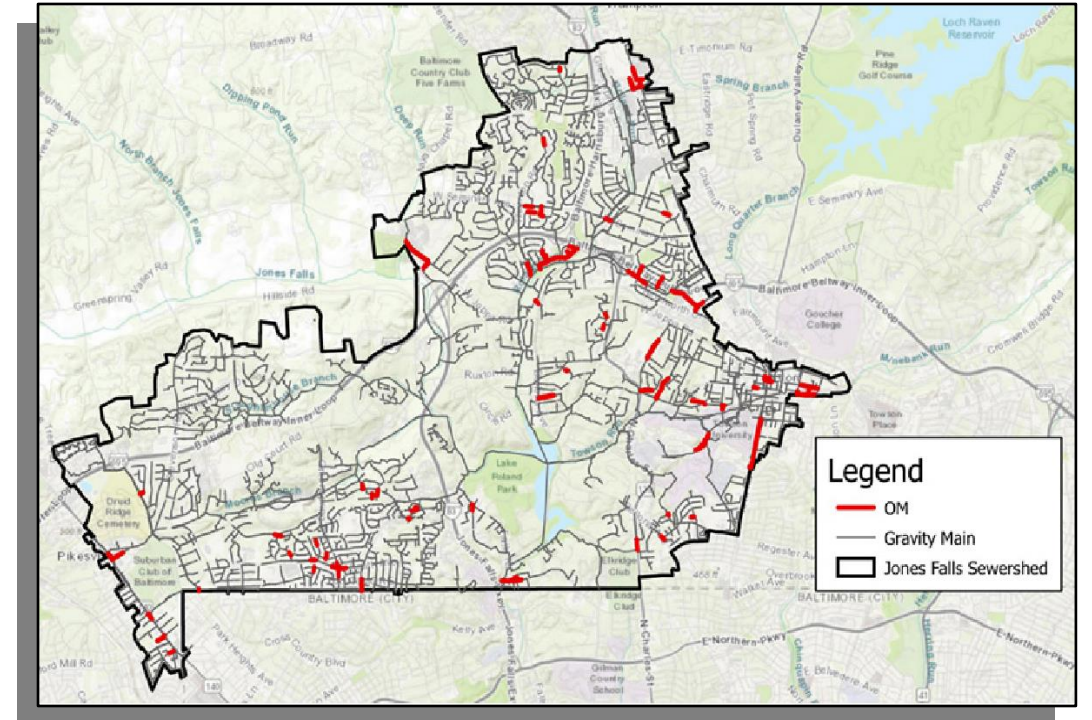
Baltimore County  
Department of  
Public Works and  
Transportation



Kathy Klausmeier, County Executive

# JONES FALLS SEWERSHED

- Invested \$28M since 2013.
- Funds used for relining pipes, replacing valves, conducting smoke and dye testing, installing new pipelines.
- Estimated \$13M in future projects planned.



Baltimore County  
Department of  
Public Works and  
Transportation



Kathy Klausmeier, County Executive

# CONSENT DECREE UPDATE

- Spent \$900M addressing overflow structures in sewer system.
- Additional \$550M projected for additional projects already accounted for in 6-year CIP.
- DPWT closed 34 of 44 overflow structures.



# Thank You!



Lauren Buckler, Director  
111 W. Chesapeake Avenue, RM 307  
410.887.4120