

**NOTES:**

2021 IECC CODE COMPLIANCE ADDITIONS  
ONE-STORY AND 600 SQ.FT. OR LESS.

WHEN ANY PORTION OF A SPACE-CONDITIONING SYSTEM (HEATING, COOLING OR BOTH) IS INSTALLED OUTSIDE THE BUILDING THERMAL ENVELOPE, SUCH AS NATURALLY-VENTILATED ATTIC SPACE OR CRAWL SPACE, DUCK TIGHTNESS SHALL BE VERIFIED BY AIR LEAKAGE TEST. R403.3.5

EAVE Baffle R402.2.3 MUST MAINTAIN OPENING EQUAL OR GREATER THAN SIZE OF VENT.

Component Table R402.1.1	Required
Walls	R-30 OR R-20 +5
Mass Walls	R-8/13
Basement Wall	R-10/13
Crawl Space	R-10/13
Floor Slab	R-10 at 4 FT.
Floor over unconditioned space	R-19
Ceiling / Roof	R-60
Fenestration	Max. U-Factor 0.30
Skylight U-Factor	Max. U-Factor 0.55
Sunrooms-Thermally Isolated (R402.3.5)	Max. U-Factor 0.45
Access Hatches and Doors from Conditioned to unconditioned spaces	Weather stripped and insulated to equivalent on surrounding surfaces R402.2.4



PERMITS, APPROVALS AND INSPECTIONS

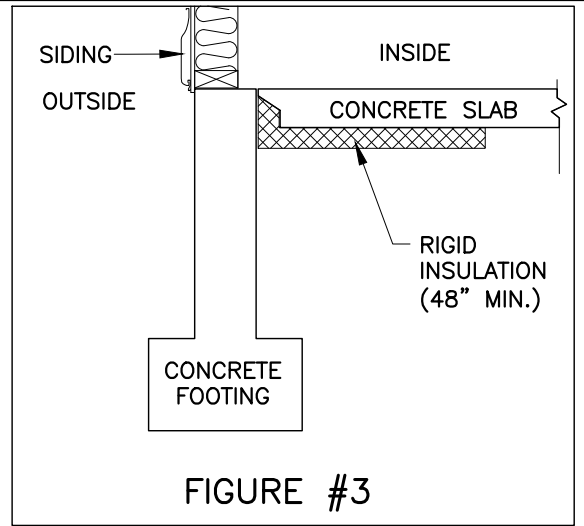
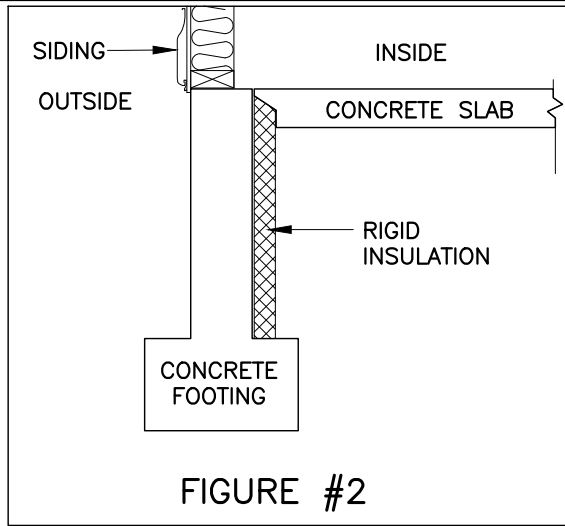
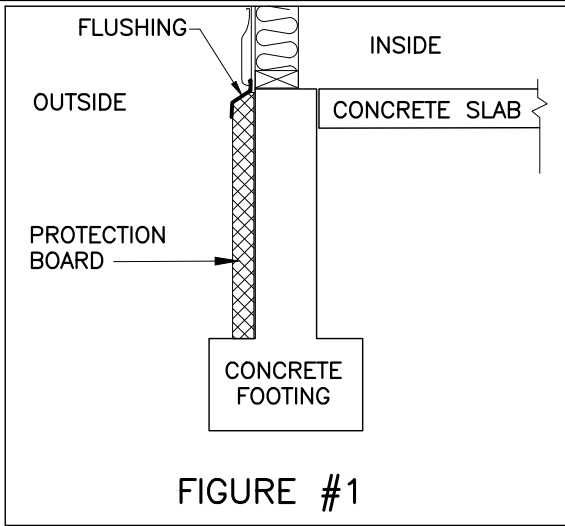
BALTIMORE COUNTY BUILDING CODE

**BUILDING THERMAL ENVELOPE  
ONE STORY ADDITIONS 600 SQ.FT. OR LESS**

REVISIONS:

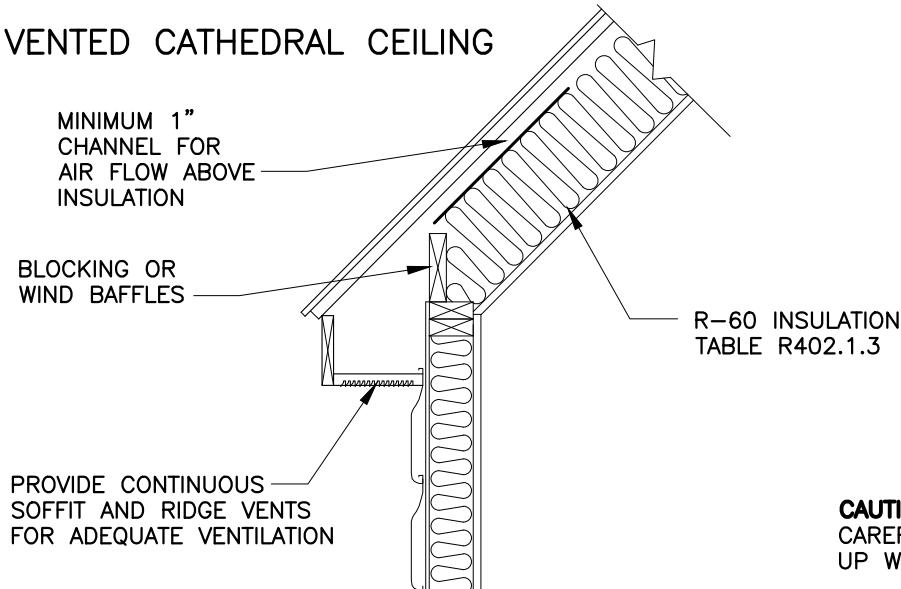
SEPTEMBER 3, 2024

JULY 1, 2015



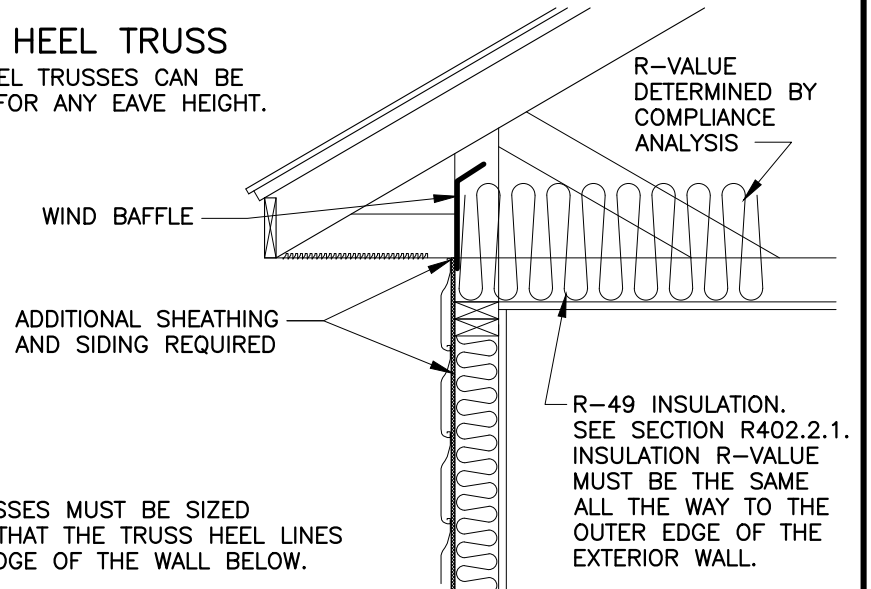
**SLAB EDGE INSULATION OPTIONS.** APPLIES TO SLABS WITH A FLOOR SURFACE < 12 INCHES BELOW GRADE. MUST EXTEND DOWNWARD FROM TOP OF SLAB **A MINIMUM OF 48 INCHES.**

**VENTED CATHEDRAL CEILING**



**RAISED HEEL TRUSS**

RAISED HEEL TRUSSES CAN BE ORDERED FOR ANY EAVE HEIGHT.



**CAUTION:** TRUSSES MUST BE SIZED CAREFULLY SO THAT THE TRUSS HEEL LINES UP WITH THE EDGE OF THE WALL BELOW.



PERMITS, APPROVALS AND INSPECTIONS

BALTIMORE COUNTY BUILDING CODE

**BUILDING THERMAL ENVELOPE  
ONE STORY ADDITIONS 600 SQ.FT. OR LESS**

REVISIONS:

SEPTEMBER 3, 2024

JULY 1, 2015