



Baltimore County Planning Board
Capital Improvement Program
Land Preservation FY23
February 1, 2022

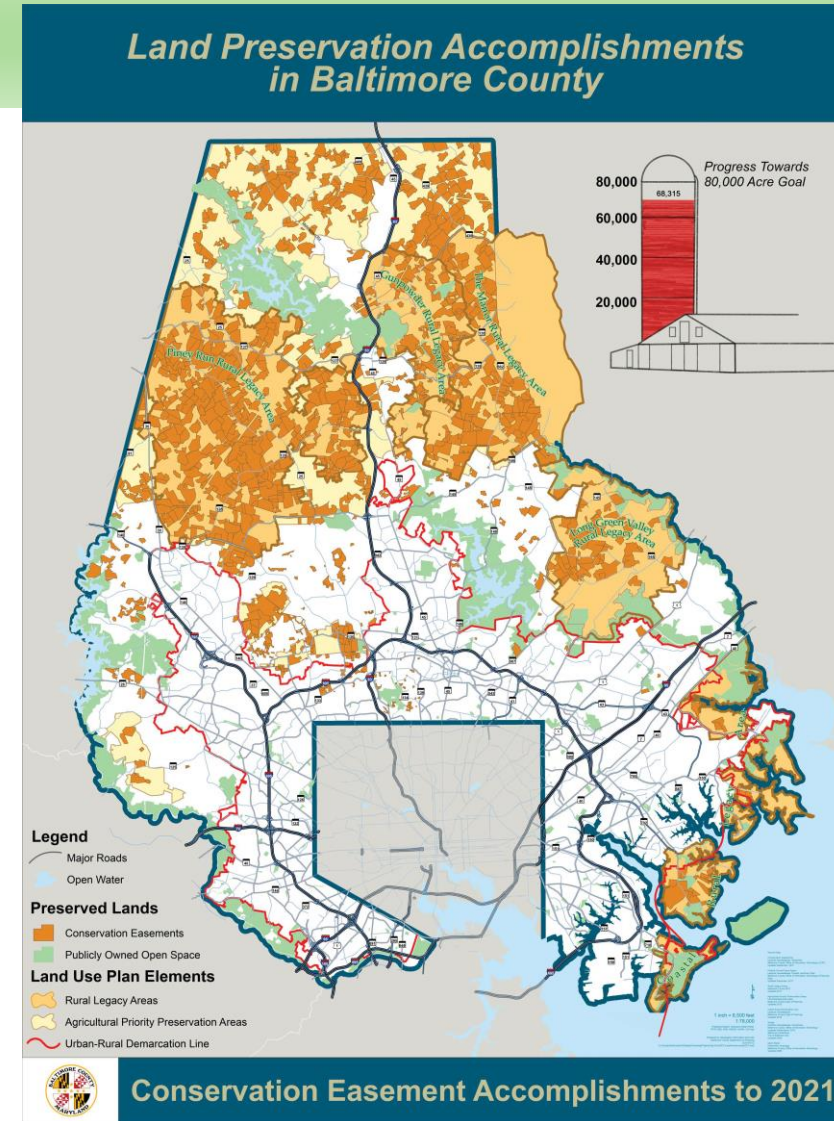


Land Preservation Goal

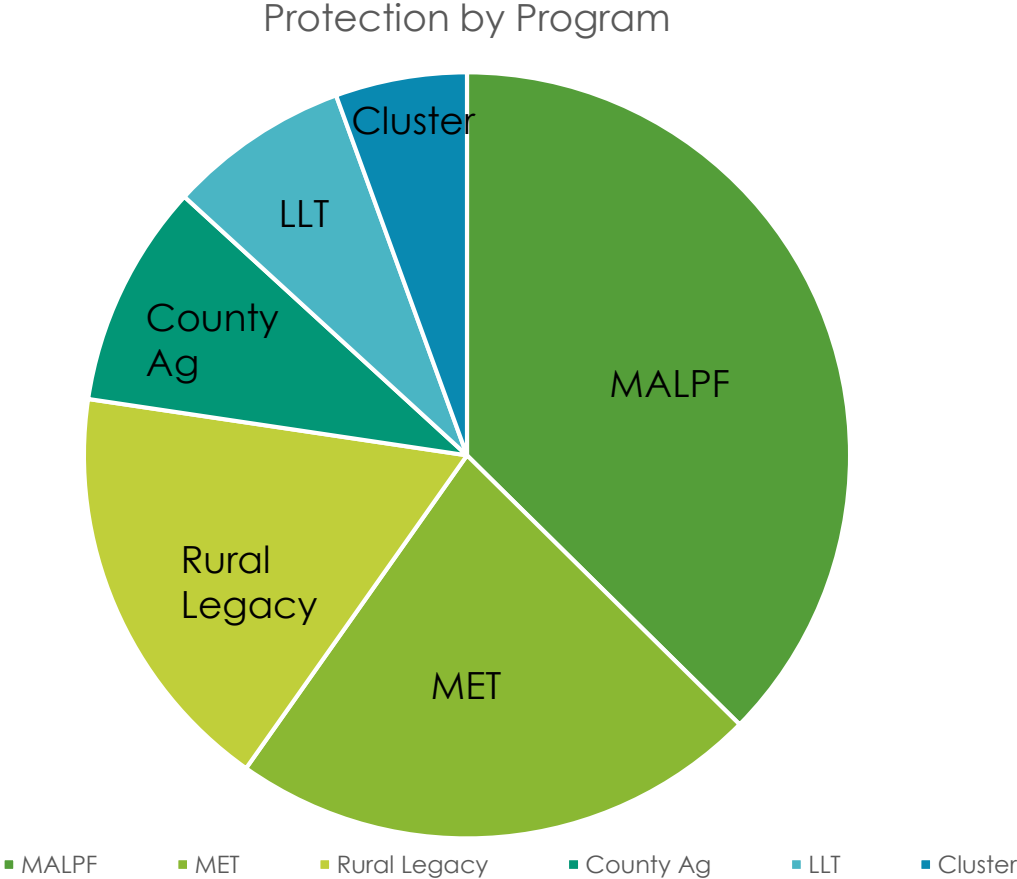
Objective for Land Preservation:

Permanently preserve lands for agriculture and natural resources to achieve the goal of at least 80,000 acres.

68,315 acres permanently protected
as of 2021
85% of goal



LAND PRESERVATION PROGRAMS



Project List: Completed and Active Projects-MALPF

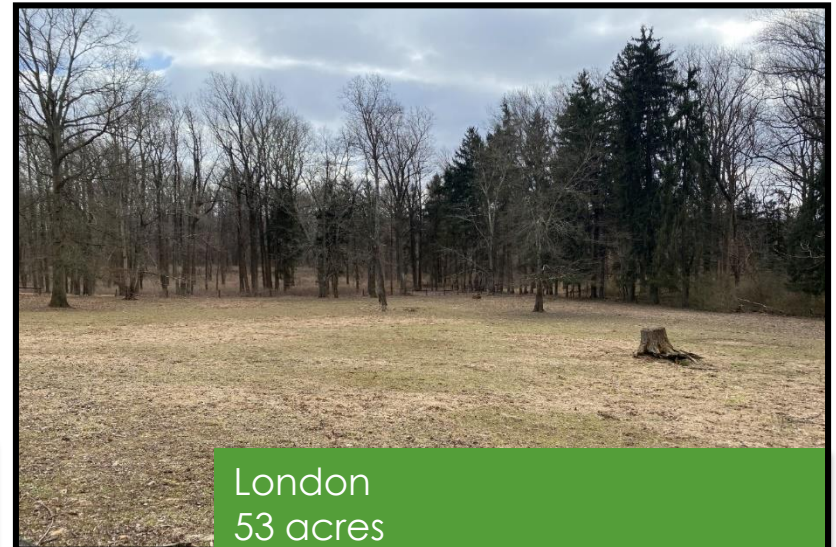
Project #	Project Title & Description	Status	Expenditures to Date	Budgeted
217P001	Ensor, Dairy, 96 ac	Complete	342,900	
	London, Woods, 43 ac	Complete	158,400	
	Pieper, Grain, 57 ac	Pending recordation	168,000	
	Wisnom, Cattle, 12 ac	Complete	31,012	
	Cold Bottom, Grain 44 ac	Complete	132,510	
	Bressler, Gr&Wds 223	Active		597,903
	Freefolie, Gr&Wds 123	Active		463,488
	Bohlayer, grain, 80 ac	Active		113,041
	Two Cows, row crops, 95 ac	Active		263,398
	Uhler, grain, 61 ac	Active		191,341
	Millstone, row crops, horses, 116 ac	Active		324,898
	Taymans, row crops, 79 ac	Active		222,444
	Johns, hay/beef, 45 ac	Active		125,013
	Alexander, Org Veg/Sp grain, 24 ac	Active		79,418



Wisnom
12 acres
Tyson Road



Cold Bottom Farms
44 acres
Gore Mill Road



London
53 acres
Hernwood Road



Kemp/Ensor
96 acres
Thornton Mill Road



Pieper
57 acres
Mt. Carmel Road

Project List: Future Projects—MD Agricultural Land Preservation Foundation

Project #	Project Title & Description	Status	FY 2022	FY 2023	FY 2024	FY 2025	FY 2026	FY 2027
217P001	MALPF FY22 Cycle Estimated 520 ac	Future	1.33 m					
	MALPF FY23 Cycle Estimated 520 ac	Future		1.33 m				
	MALPF FY24 Cycle Estimated 520 ac	Future			1.33 m			
	MALPF FY25 Cycle Estimated 520 ac	Future				1.33 m		
	MALPF FY26 Cycle Estimated 520 ac	Future					1.33 m	
	MALPF FY27 Cycle Estimated 520 acres	Future						1.33 m

Project List: Completed and Active Projects-County Ag

Project #	Project Title & Description	Status	Expenditures to Date	Budgeted
217P001	Durham 65 ac	Active		423,989
	Miller 79ac	Active		514,503
	RMP 66 ac	Active		360,376
	Herbert 26 ac	Active		132,973
	Mays 46 ac	Active		314,232
	Worthley 18 ac	Active		94,769
	Belfast Farms 58 ac	Active		408,106



Project List: Baltimore County Rural Legacy Program

Project No.	Project Title & Description	Status	Expenditures to date	FY2022	FY2023	FY2024	FY2025	FY2026	FY2027
217P002	BC Land Trust Alliance	Active/ Future	25,000	50,000		50,000		50,000	
	Piney Rural Legacy Area 241 acres	Active	130,709	500,000					
	Long Green Rural Legacy	Future		100,000					
	Rural Legacy Easements	Future				100,000		100,000	

Sustainability Review: Resiliency and sustainability considerations into the decision making process for developing the capital program

Project #	Project Title & Description	Does the project qualify for any Green Certification?	How does the project reduce greenhouse gas emissions through energy efficiency, native landscaping, renewable energy or other strategies?	How is the project constructed to withstand changes in climate and extreme weather events during the project's life cycle?	How does the project support the goals of the County's Hazard Mitigation Plan?	How does the project provide resiliency or environmental benefits to the surrounding community?
217P001	MALPF Ag Program	No (Been attempts to have these lands recognized thru MS 4)	Stream buffer protection through conservation plans. Farming practices conducted under plans to protect soil and water quality. Ecosystem services	Limits density and requires conservation practices that can be updated over time. Enhances stream flows to reservoirs by retaining pervious surfaces and natural recharge flows	Goal 2, Objective 1. Green infrastructure with connections & encourage tourism, etc.	Maximizes the resiliency to communities by protection of farmland, woodland, wildlife areas, streams and wetlands, wells, through permanent easement restrictions that are monitored.
217P001	County Ag Program	No	Same	Same	Same as State Program	Same
217P002	Rural Legacy Program (County & State)	No	Maximizes the long term protection of forest land by requiring retention of the forest and management plans, requires significant stream buffer protection.	Same State easement provide buffers for sea level rise in coastal areas	Meets Goal 1, Obj 3, Action 2 – Restrictions on deeds on vulnerable properties: Goal 2, Obj 1, green infrastructure; Goal 3 Obj. 3 private public partnerships to protect properties.	Same



Sustainability
Benefits of
Land
Preservation

Focus
infrastructure
inside the
URDL

Protection of
reservoirs and
streams

Eliminate
development
in flood prone
areas

Protect large
blocks of
forest for
carbon
storage

Maintaining
crop land for
local food
production

Equity Review: How underserved and vulnerable populations are incorporated into the agency's decision making process for providing equity in the capital program.

