



Baltimore County Planning Board
Capital Improvement Program
Land Preservation FY24
January 26, 2023

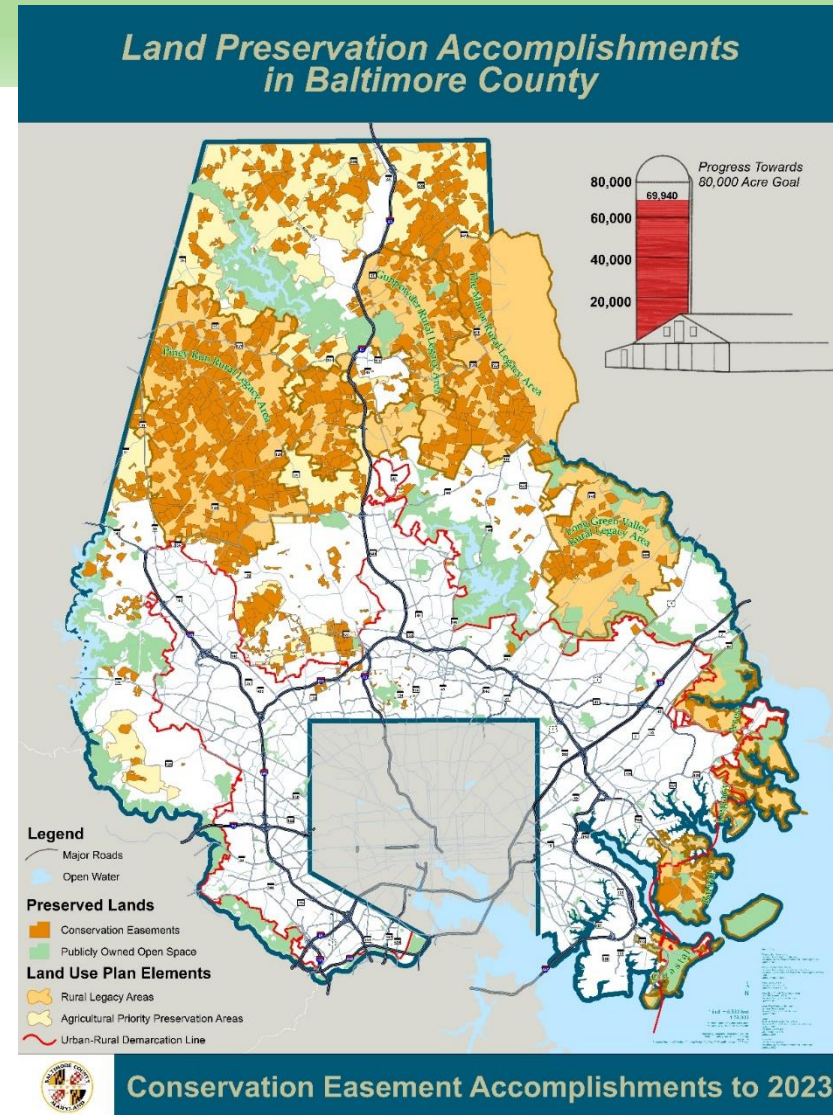


Land Preservation Goal

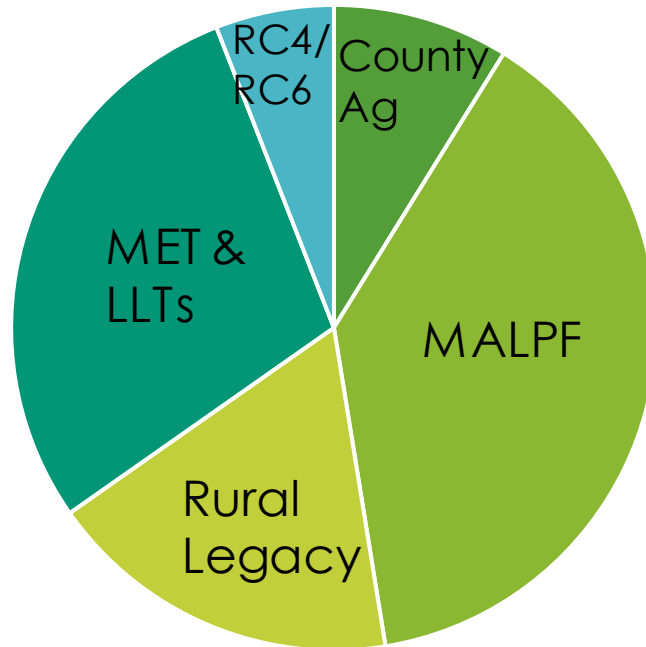
Objective for Land Preservation:

Permanently preserve lands for agriculture and natural resources to achieve the goal of at least 80,000 acres.

69,940 acres permanently protected
as of 2022
87% of goal



LAND PRESERVATION PROGRAMS

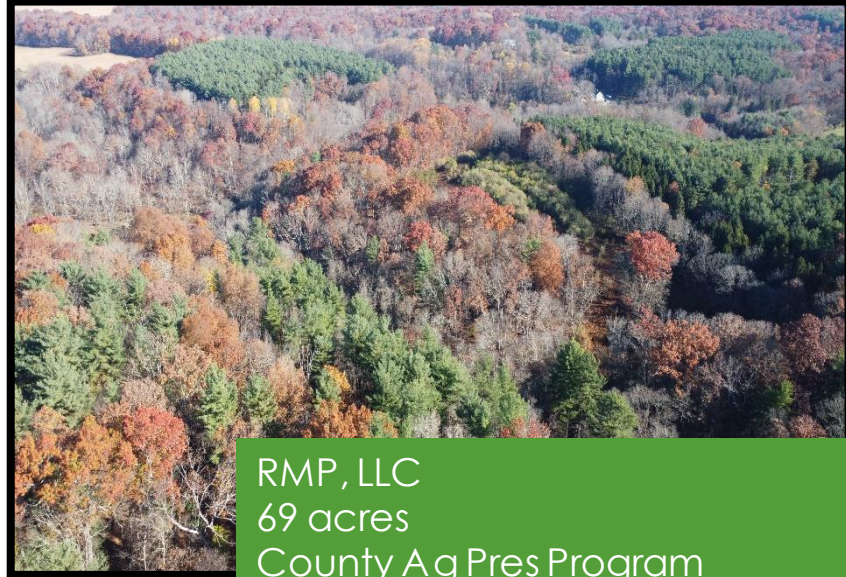


Project List: Completed and Active Projects

Project #	Project Title & Description	Status	Expenditures to Date	Budgeted
217P001-MALPF	Gracefields & Westwell, LLCs, grain/equine 115 ac	Complete	324,898	
217P001-MALPF	Alexander, org veg/spc. grain, 24 ac	Pending recordation	79,415	
217P001-County Ag	Mays, grain, 46 ac	Pending recordation	314,242	
217P002-County RL	Fox Springs Farm, corn/soy, 59 ac	Complete	286,064	
217P001-MALPF	McCausland, grain/soy, 30 ac	Active		266,400
217P001-County Ag	Durham, corn/soy, 65 ac	Active		423,989
217P002-County RL	Trupe, corn/soy, 141 ac	Active		520,449



Carmel View Farm
135 acres
County Rural Legacy



RMP, LLC
69 acres
County Ag Pres Program



Bressler Family
221 acres
MALPF



Rush Family
93 acres
MALPF



Mistfield Farms, LLC
51 acres
MALPF



Gracefields & Westwell, LLCs
115 acres
MALPF

Project List: Future Projects—MD Agricultural Land Preservation Foundation

Project #	Project Title & Description	Status	FY 2024	FY 2025	FY 2026	FY 2027	FY 2028	FY 2029
217P001	MALPF – easements on farms/woodlands	Future	2 m	2 m	2 m	2 m	2 m	2 m
	County Ag Pres	Future	1 m		1.96 m		1.1 m	
217P002	County Rural Legacy-easements	Future	460 k		500 k		500 k	
	Baltimore County Land Trust Alliance	Future	60k		60 k		60 k	

Sustainability Review: Resiliency and sustainability considerations into the decision making process for developing the capital program

Project #	Project Title & Description	Does the project qualify for any Green Certification?	How does the project reduce greenhouse gas emissions through energy efficiency, native landscaping, renewable energy or other strategies?	How is the project constructed to withstand changes in climate and extreme weather events during the project's life cycle?	How does the project support the goals of the County's Hazard Mitigation Plan?	How does the project provide resiliency or environmental benefits to the surrounding community?
217P001	MALPF Ag Program	No (Been attempts to have these lands recognized thru MS 4)	Stream buffer protection through conservation plans. Farming practices conducted under plans to protect soil and water quality. Ecosystem services	Limits density and requires conservation practices that can be updated over time. Enhances stream flows to reservoirs by retaining pervious surfaces and natural recharge flows	Goal 2, Objective 1. Green infrastructure with connections & encourage tourism, etc.	Maximizes the resiliency to communities by protection of farmland, woodland, wildlife areas, streams and wetlands, wells, through permanent easement restrictions that are monitored.
217P001	County Ag Program	No	Same	Same	Same as State Program	Same
217P002	Rural Legacy Program (County & State)	No	Maximizes the long term protection of forest land by requiring retention of the forest and management plans, requires significant stream buffer protection.	Same State easement provide buffers for sea level rise in coastal areas	Meets Goal 1, Obj 3, Action 2 – Restrictions on deeds on vulnerable properties: Goal 2, Obj 1, green infrastructure; Goal 3 Obj. 3 private public partnerships to protect properties.	Same



Focus
infrastructure
inside the
URDL

Protection of
reservoirs and
streams

Eliminate
development
in flood prone
areas

Sustainability
Benefits of
Land
Preservation

Protect large
blocks of
forest for
carbon
storage

Maintaining
crop land for
local food
production

Equity Review: How underserved and vulnerable populations are incorporated into the agency's decision making process for providing equity in the capital program.

